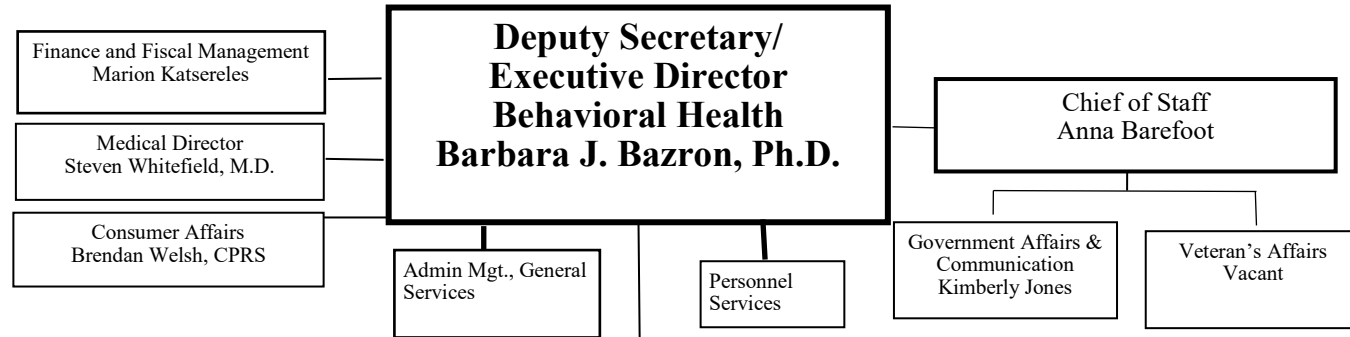


Department of Health - Behavioral Health



Director, Health Promotion & Prevention
Kathleen Rebbert-Franklin
 Deputy, Mary Viggiani

Director, Systems Management
Vacant
 Deputy, Cynthia Petion

Director, Court Ordered Evaluations and Placements
Michele Fleming

Director, Clinical Services Adults and Older Adults
Marian Bland
 Deputy, Steven Reeder

Director, Child, Adolescent and Young Adult Services
Vacant
 Deputy Thomas Merrick

Director, Behavioral Health Facilities
John Robison

Offices

Divisions

Prescription Drug Monitoring Program (PDMP) & OD Prevention Applied Data
 Kate Jackson

Prevention
 Michael Baier

Early Intervention & Wellness
 Barrington Page

Statewide Projects - Tobacco, Gambling, Eugenia Conolly

Workforce Development & Training, Michelle Darling

Public Awareness
 Margie Donohue

Deputy Director Systems Management
 Cynthia Petion

Planning
 Hilary Phillips

Local Planning and Management
 John Newman

Managed Care & Quality Improvement
 Vacant

Accreditation and MH Compliance, Spencer Gear

SUD Compliance
 Franklin Dyson

Health Care Quality
 Stacey Diehl

Data/IT
 Susan Bradley

Applied Research & Evaluation
 James T. Yoe

Community Aftercare
 Johanna Walter

Justice Services—Title 8
 Nicolle Birkhead

Clinical Practice
 Vacant Medical Director

Central Admissions Manager—
 Title 3— JoAnne S. Dudeck

Disabilities

Systems Integration/Community Liaison, Vacant

Crisis and Criminal Justice Services
 Darren McGregor

Gender Specific Services
 Suzette Tucker

Older Adults/Long Term Care
 Stefani O'Dea

Evidence-Based Practices and Recovery Supports
 Mona Figueroa

Promotion and Wellness
 Joan Smith

Substance Use Disorders
 Shanna Wideman

Transition Aged Youth
 Natalee Solomon

Child & Adolescent Programming
 Caroline Jones

Juvenile Forensics
 Vacant

RICA Baltimore
 Bryan Mroz, CEO

JLG RICA
 Ken Basler, CEO

Facility Operations Oversight

Eastern Shore Hospital Ctr
 Randy Bradford, CEO

Thomas B. Finan
 John Cullen, CEO

Clifton T. Perkins
 Christopher Irwin, CEO

Spring Grove Hospital
 Dwain Shaw, CEO

Springfield Hospital
 Paula Langmead, CEO

Intake—Spring Grove
 Vacant, Director

June, 2018 revised 6.11.18